

Western Australian
Rogaining Association
Winter 24 hour Rogaine
June 5 & 6, 2004

ROGAINING 101

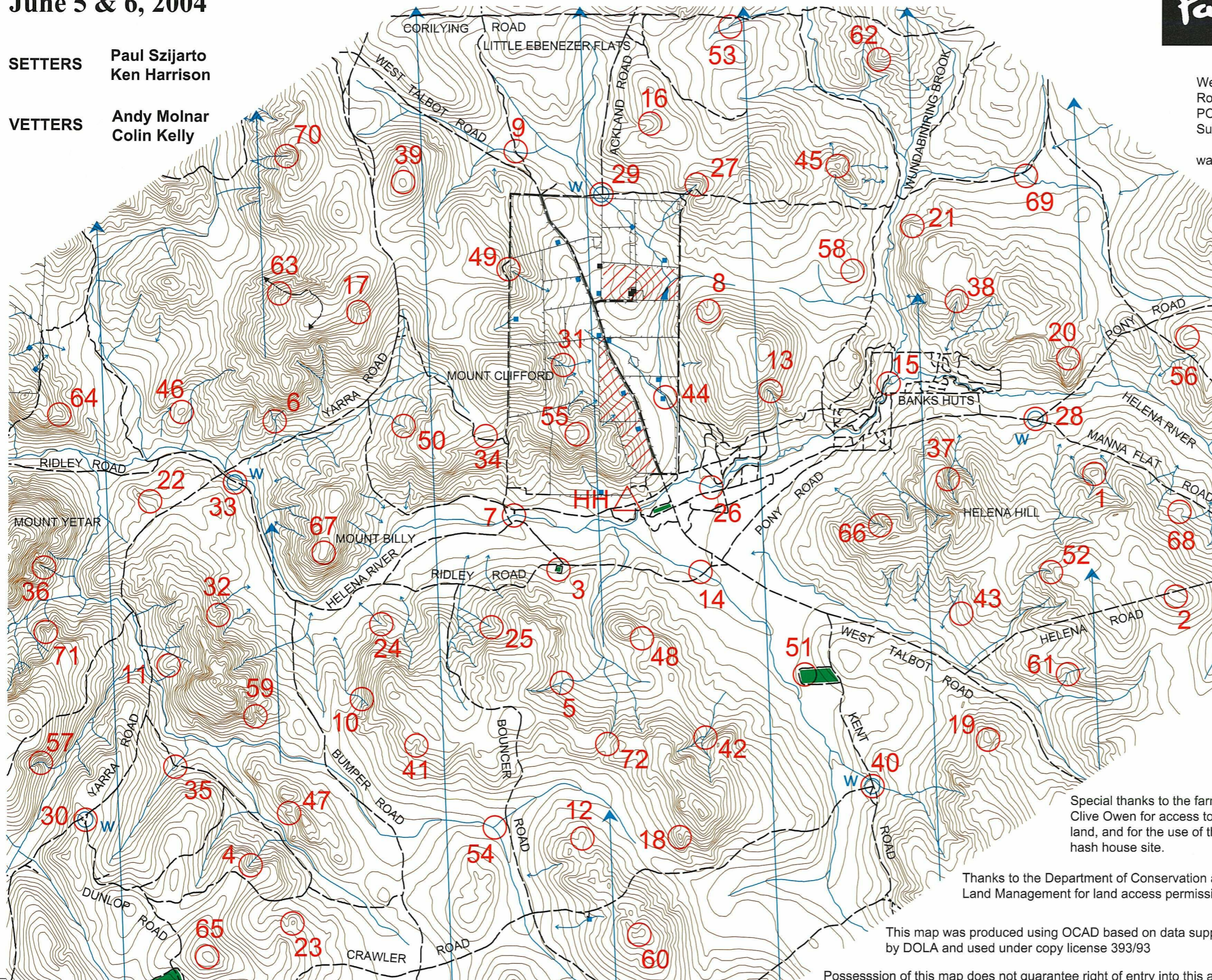
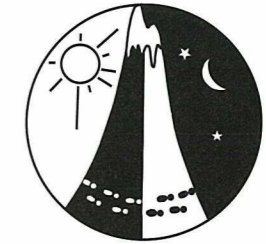
Incorporating the Paddy Pallin
6 hour Schools Championships



SETTERS Paul Szjarto
Ken Harrison

VETTERS Andy Molnar
Colin Kelly

Western Australian
Rogaining Association
PO Box 1201,
Subiaco, WA 6904
wa.rogaine.asn.au



LEGEND

- Control 70
- Contours
- Hash House HH
- Waterdrop W
- Magnetic North Line
- Out of Bounds
- Buildings
- Dams
- Road, Gravel
- Track
- Watercourse
- Fence line
- Pine plantation

SCALE 1:50,000, 5 metre contour interval
0 1km 2km 3km

Special thanks to the farmer
Clive Owen for access to his
land, and for the use of the
hash house site.

Thanks to the Department of Conservation and
Land Management for land access permission.

This map was produced using OCAD based on data supplied
by DOLA and used under copy license 393/93

Possession of this map does not guarantee right of entry into this area.



WARA receives financial support
from Sport and Recreation WA.

Rogaining 101 : Examination Aid

June 5 & 6, 2004

Control number	Description	Points	Control number	Description	Points	Important Information
1	The knoll	20	37	The gully	60	Control Cards Sat : 11.30am Briefing Sat : 11.45 am Start Sat : 12.00 noon Finish Sun : 12.00 noon Hash House Opens Sat : 4.00 pm Closes Sun : 1.00 pm Sunset Sat : 5.20 pm Sunrise Sun : 7.11 am Moonrise Sat : 7.26 pm Moonset Sun : 10.27 am Number of Controls 72 Total Points 4140
2	The knoll	20	38	The gully	60	
3	The small pine planation	20	39	The summit	60	
4	The gully	20	40	The road junction, WATER	60	
5	The watercourse junction	20	41	The gully	60	
6	The watercourse junction	20	42	The watercourse junction	60	
7	The track - river junction	30	43	A rocky outcrop southern edge	60	
8	The gully	30	44	The dam, north - east corner	60	
9	The track bend	30	45	The knoll	60	
10	The watercourse junction	30	46	The knoll	60	
11	The spur	30	47	A boulder cluster	60	
12	The knoll	30	48	The saddle	60	
13	The gully	40	49	The gully	70	
14	The water course	40	50	The gully	70	
15	The creek junction	40	51	The pine plantation	70	
16	The gully	40	52	The gully	70	
17	The gully	40	53	The watercourse	70	
18	The knoll	40	54	The watercourse junction	70	
19	The knoll	40	55	The summit	80	
20	The gully	40	56	The spur	80	
21	The spur	40	57	The gully	80	
22	The broad knoll	40	58	The spur	80	
23	The knoll	40	59	The gully	80	
24	The gully	40	60	The knoll	80	
25	The gully	50	61	The bend in the water course	90	
26	The river bend	50	62	The spur	90	
27	The gully	50	63	The gully	90	
28	The road junction, WATER	50	64	The spur	90	
29	The track junction, WATER	50	65	The knoll	90	
30	The road junction, WATER	50	66	The gully	90	
31	The watercourse junction	50	67	The broad summit	100	
32	The rocky spur	50	68	The spur	100	
33	The road, WATER	50	69	The watercourse	100	
34	A rocky outcrop, southern edge	50	70	The gully	100	
35	The track - watercourse junction	50	71	The spur	100	
36	The gully	50	72	The saddle	100	

Patrols All water drops and the following roads : Yarra, Talbot, Ridley, Pony, and Kent
Warning Beware of 5 metre overhanging rockface about 80 m south of control 20. From Pony Road approach control from South East